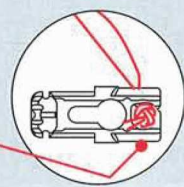
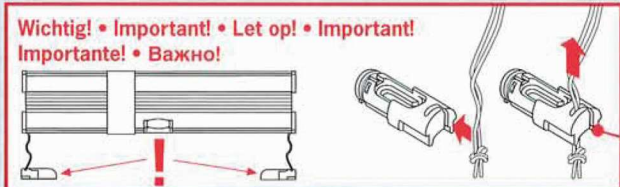


René Decker • Sonnenschutzsysteme

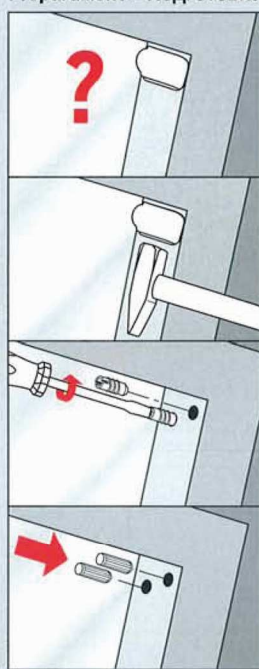
schattenspender.de • Onlineshop für Sonnenschutz nach Maß



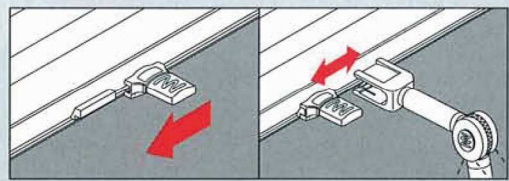
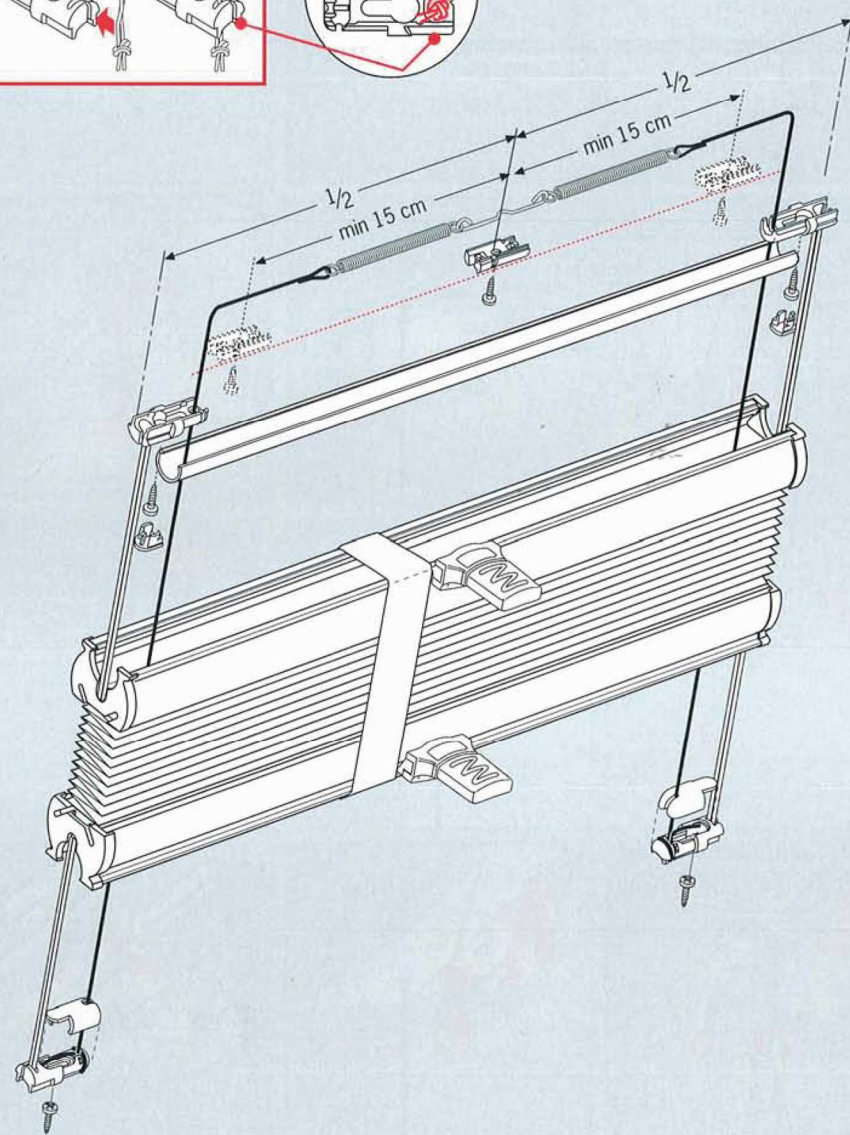
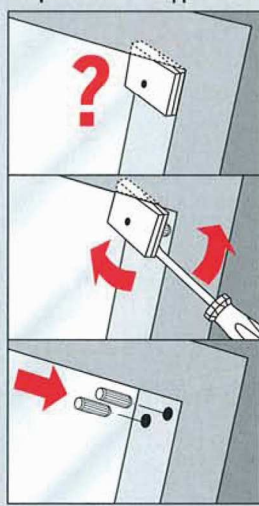
Bitte nur beiliegende Schrauben verwenden.



VELUX
 Vorbereitung • Preparation
 Voorbereiding • Préparation
 Preparazione • Подготовка



VELUX
 Vorbereitung • Preparation
 Voorbereiding • Préparation
 Preparazione • Подготовка



Montageanleitung Plisseé Typ DF20



Montage der Anlage bündig mit der Fenstervorderkante.

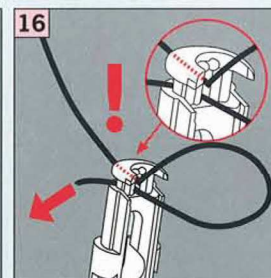
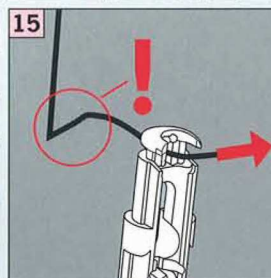
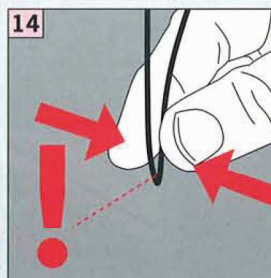
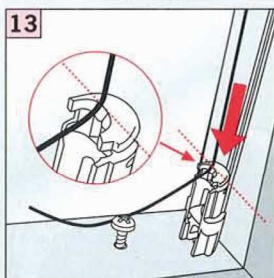
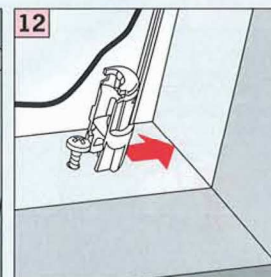
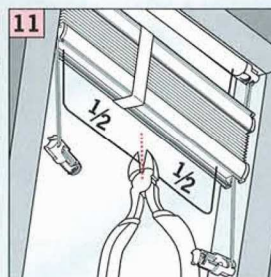
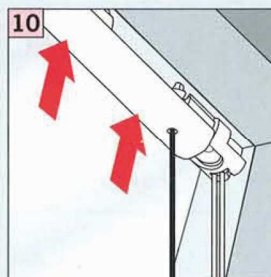
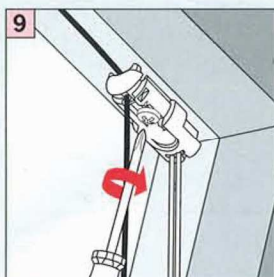
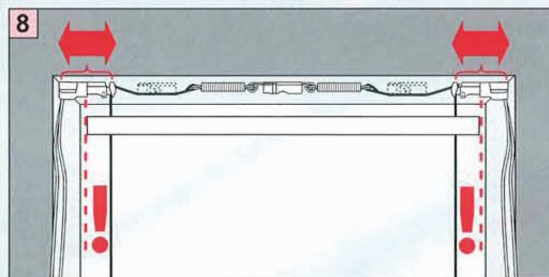
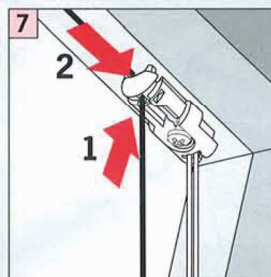
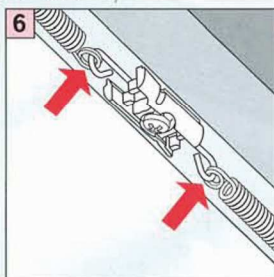
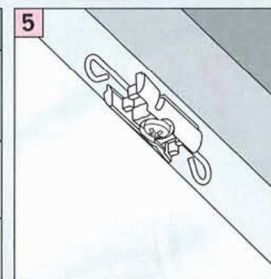
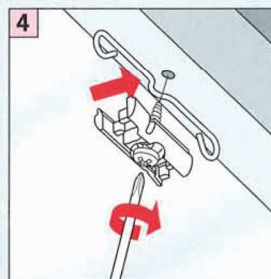
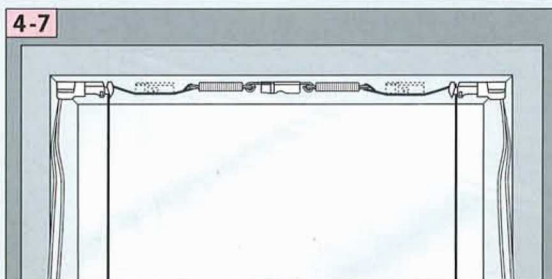
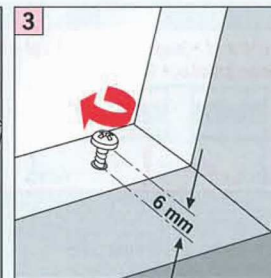
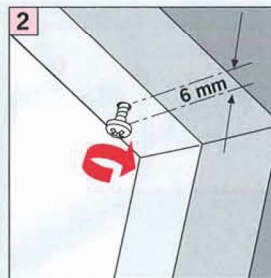
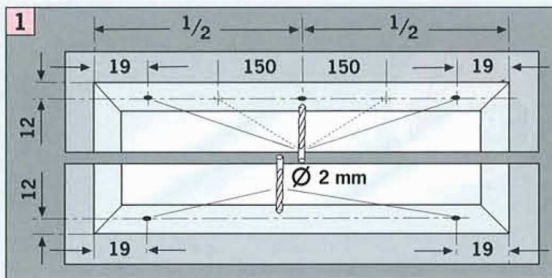
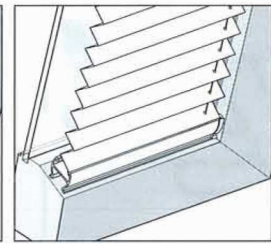
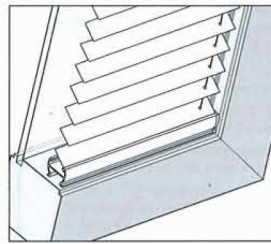
The system must be installed flush with the front edge of the window.

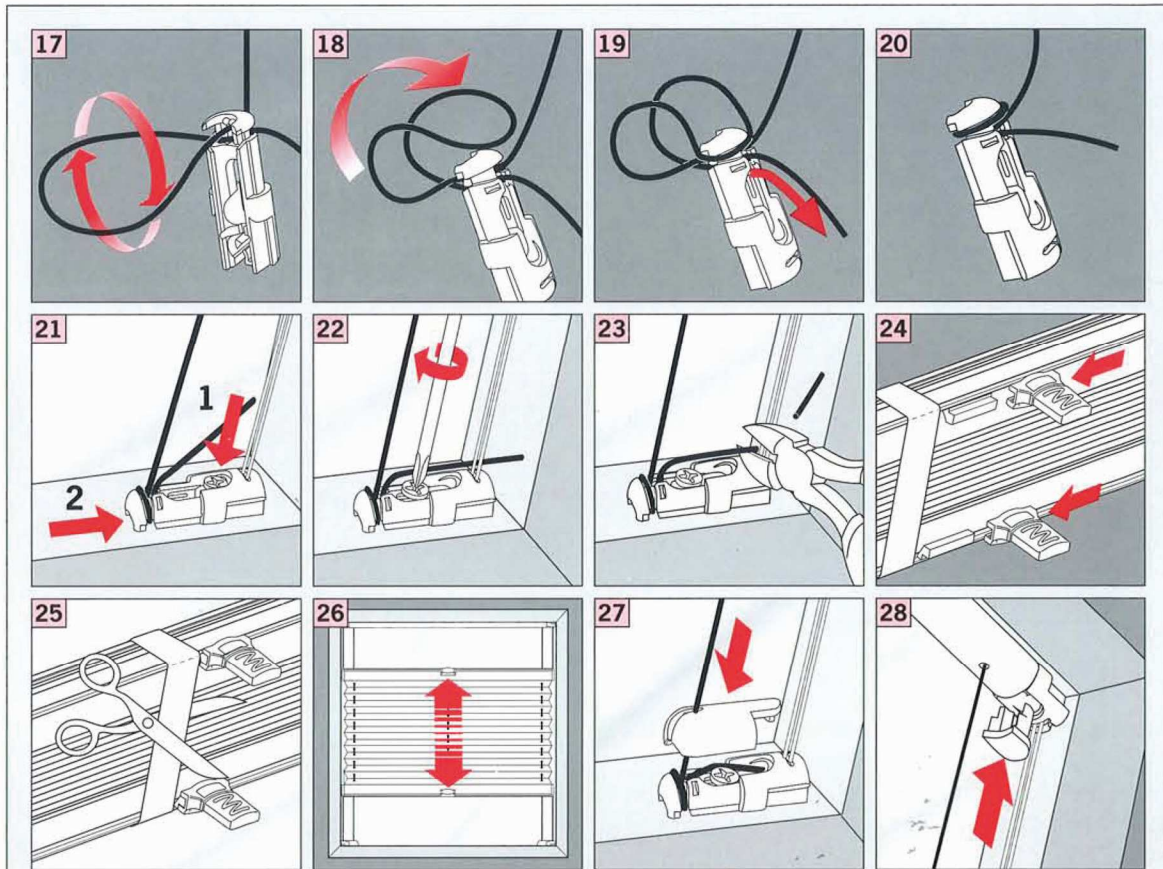
Montage van de plissé precies aan de voorkant van de glaslijst.

Montage de l'installation à fleur avec l'arête avant de la fenêtre.

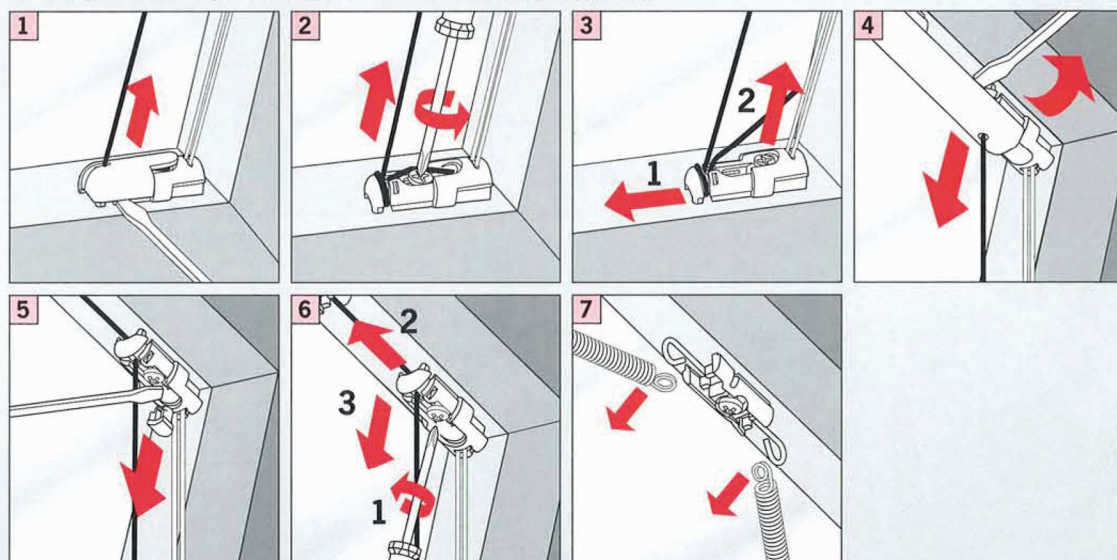
Montaggio dell'impianto a paro con il bordo anteriore della finestra.

штора монтируется в проём окна, причём низ шторы опускается до рамы.





Demontage • Disassembly • Demontage • Démontage • Smontaggio • Демонтаж



Montageanleitung Plissee Typ DF20